

# Fransiskus Simson

*by* Jiko jurnal

---

**Submission date:** 15-Feb-2023 08:15AM (UTC-0500)

**Submission ID:** 2014770803

**File name:** 5826-15606-1-SM.docx (508.59K)

**Word count:** 4034

**Character count:** 21596

## COMPARATIVE ANALYSIS OF QUALITY OF SERVICE PERFORMANCE OF VIDEO STREAMING SERVICES USING OSPF AND EIGRP NETWORKS

Fransiskus Simson<sup>1</sup>, Indrastanti R. Widiarsari<sup>2</sup>

<sup>1,2</sup>Satya Wacana Christian University  
\*Email: <sup>1</sup>672017109@student.uksw.edu, <sup>2</sup>indrastanti.widiarsari@uksw.edu

15  
(Received: dd mmm yyyy, Revised: dd mmm yyyy, Accepted: dd mmm yyyy)  
Sp. ETS Sp. ETS Sp. ETS

### Abstract

In the era of globalization, computer networks are developing very rapidly and complex human needs make it possible to exchange information and communicate over long distances. In order for video streaming service providers from servers to be accessed by service users, it requires a process of sending data packets through a path called routing. OSPF is a routing protocol that applies network speed based on metrics to consider paths to other networks. EIGRP is a routing protocol that applies bandwidth and delay-based formulas to calculate metrics to determine routes. EIGRP is a type of Dynamic routing protocol. Throughput on OSPF and EIGRP differs depending on video quality. Jitter values on OSPF and EIGRP vary depending on the quality of the video used. There is a difference in the delay time experienced for each video quality when using OSPF and EIGRP. At all video quality levels, no packets are lost using either OSPF or EIGRP routing. OSPF and EIGRP performance is sufficient in sending video data. Throughput parameters, EIGRP has better performance than OSPF for all video qualities. However, for the jitter parameter, OSPF has better performance than EIGRP at 360p and 480p video quality. While on the delay parameter, both protocols have the same good performance. In the packet loss parameter, both protocols have the same performance without packet loss.

14  
**Keywords:** OSPF, EIGRP, Video Streaming, QoS, Routing, Parameter

This is an open access article under the CC BY-SA license.



\*Corresponding Author: Author1

### 1. INTRODUCTION

In the current era of globalization, computer networks are developing rapidly, and people's increasingly complex needs make it easier for them to exchange information and communicate over long distances. Nowadays, Indonesian society is increasingly using video streaming services. To enable direct access to the video streaming service provider's server by users, a packet data transmission process is required through a path called routing. In this case, routing is used as a reference to select the route or path that the packet data will pass through and then forwarded to the network that will be the destination of the packet data. There are two types of routing commonly used, namely Static routing and Dynamic routing. Static routing is a method in configuring the routing table by manually inputting all contents of the routing table, and is usually used in small-scale networks, while Dynamic routing is a method of filling the routing table by the router automatically and is used in large-scale networks[1]. To realize an ideal

long-distance communication system, a routing protocol is needed to manage the data flow and path selection on the network[2]. Therefore, it is crucial to choose the appropriate routing protocol to strengthen traffic management. There are several types of routing protocols commonly used, but the OSPF and EIGRP routing protocols are widely used today[3].

When doing real-time streaming, buffering and delay often occur, and this can also result in suboptimal streaming quality, which can affect the Quality of Service (QoS) of a streaming service, including packet loss, delay, throughput, and jitter. Quality of Service can be defined as a measure of how well a network performs, and an effort to determine the characteristics of a network[4].

In a previous research on Quality of Service (QoS), Unung Verawardina stated that network administrators must be aware of the performance comparison of a routing in order to design and create a good and high-quality network service system in accordance with Quality of Service (QoS) standards, which include delay, packet loss, and throughput [5].

In a study [6], it was explained that the research shows that the delay and throughput values of OSPF are better by 2-15% compared to EIGRP under conditions where the connection is not down, while when the connection is down, EIGRP is better by 45-52% for delay and 38-48% for throughput.

The rapid development of the internet network has made information service systems faster, so research focusing on video conferencing aims to ensure smooth running without disruption and can be implemented using a system where the video conference bandwidth is prioritized for accessing video streaming data. The goal of bandwidth management is to reduce network congestion and prioritize important data packets to ensure the smooth running of video conferencing, as described in [7] research.

There are several measurement parameters for Quality of Service (QoS) in a network. The standard for QoS parameters is THIPON (Telecommunication and World Protocol Harmonization Over Network)[8]. Here is an explanation of the QoS Index in Table 1.

Table 1. Quality of Service Index

Index	Percentage	Mark
Weak	25 - 49.75 %	1 - 1.99
Currently	50 - 74.75 %	2 - 2.99
Good	75 - 94.75 %	3 - 3.79
Very good	95 - 100 %	3.8 - 4

The percentage results in Table 1 are used to determine the quality of a network. QoS index is based on the average value of parameters such as Throughput, Jitter, Packet loss, and Delay. Throughput is the speed of a network in the process of data transfer, measured in kbps, by observing the amount of data that will be sent until the data is received by the client [9]. Jitter is the type or variation in packet arrival delay in a network. The magnitude of jitter is greatly influenced by the variation in traffic weight and the magnitude of packet collisions (congestion) that exist in a network [10]. Delay is the time required for a data packet to travel from the transmitter to the receiver. Packet Loss is the percentage of data packets lost during data transmission, which can also be caused by data collisions in a network [11].

## 2. RESEARCH METHOD

Quality of Service (QoS) is the ability of a network to provide good service by providing bandwidth, overcoming jitter and delay. QoS is heavily determined by the quality of the network being used. QoS is designed to help end users (clients) become more productive by ensuring that users receive reliable performance from network-based applications. QoS refers to a network's ability to provide better service for certain network traffic through various technologies [12].

OSPF is a routing protocol that implements network speed based on metrics to consider paths to other networks. Each router maintains a simple map of

the entire network. Updates are multicast and sent when configuration changes occur. OSPF is suitable for large networks. The main advantage of this protocol is that it can quickly detect changes and make routing converge again quickly with minimal data exchange [13].

EIGRP is a routing protocol that applies a formula based on bandwidth and delay to calculate a suitable metric for determining the route. EIGRP is one of the types of routing protocols that falls under the group of Dynamic routing protocols [14]. Graphical Network Simulator (GNS3) is a network emulator for Cisco devices that can simulate even complex networks. The latest technology of GNS3 provides a platform to design protocols and technologies, as well as to test and demonstrate them with realistic scenarios before production [15].

Wireshark is a software application used to analyze network packets, also known as a network packet analyzer, with the function of capturing every packet that passes through a network and also used to display all packet data issues in detail [16]. In the research on the analysis of Quality of Service of video streaming services using OSPF and EIGRP networks to obtain maximum results, there are several stages of the process that must be passed using the research stages developed by Cisco, as follows:

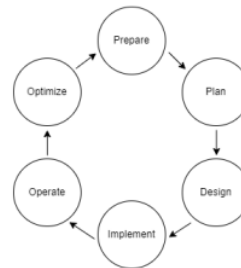


Figure 1. Research Stages

Prepare is the initial stage of conducting research by identifying the problem and preparing everything needed for the study. In this stage, the problem related to the research topic is identified. Next, Plan is the stage to determine the needed requirements and collect reference data as literature study needed for the research to achieve its objective. In this stage, research planning is done to not exceed the limits of the research topic. Design is the stage of creating a network topology according to the research needs to meet the research objective. In this stage, a topology is created that meets the specifications and needs of the research. Next, Implement is the stage where everything needed and collected for the research is processed and executed with GNS3 software. In this stage, if everything needed for the research is already fulfilled, then it is directly implemented and processed into GNS3. Operate in this stage, testing is done on each network, namely OSPF and EIGRP networks. Quality of Service testing on video streaming is also carried

out using OSPF and EIGRP networks and data is captured using the Wireshark application. Finally, Optimize, in the last stage, after testing and data collection is completed and the results have been obtained. Next, data analysis and evaluation are carried out on the Quality of Service data obtained from the testing, and conclusions are drawn from the data. Furthermore, system design and development are carried out after the system requirements analysis produces a definite conclusion, so that the system design and development process can run well. The system design process is carried out by creating a network topology according to the needs. After the topology is completed, it is then implemented into GNS3.

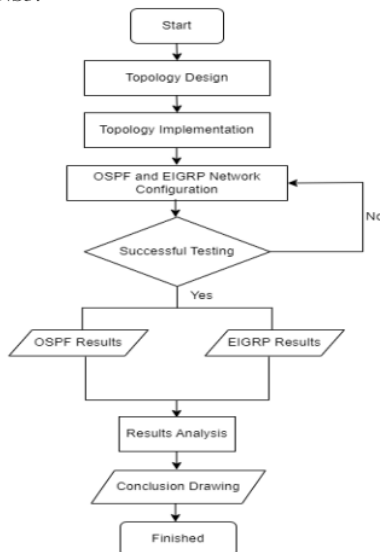


Figure 2. Research Flowchart

As shown in Figure 2, after the topology is implemented in GNS3, configuration is performed on each network, namely OSPF and EIGRP. The next step after configuration is to perform testing and data collection for video streaming services with parameters such as throughput, jitter, delay, and packet loss on each network. After obtaining the test results, analysis and conclusions are drawn.

Next, the network topology is designed according to the requirements, taking into account the available specifications to avoid exceeding the capacity of the existing specifications. In the next step, the topology shown in Figure 3 is implemented in GNS3 and will become the OSPF and EIGRP networks, and the client and server will be installed with the Windows 7 operating system to access the video streaming service. Here is the network topology that will be used:

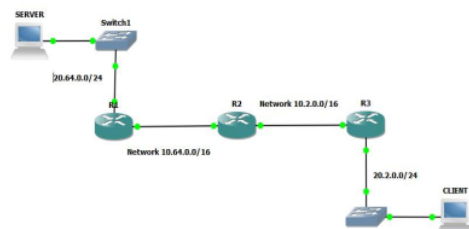


Figure 3. Network Topology

The working principle of OSPF is when the CLIENT accesses the video streaming service from the SERVER, each router R1, R2, and R3 that has been configured with OSPF and is interconnected with routing will synchronize their databases. Then, each router will store the Link State Database, which will be used to determine the fastest and shortest path to the final destination of the labeled data packet, which is to router R3. The working principle of EIGRP is when the CLIENT accesses the video streaming service from the SERVER, each router R1, R2, and R3 that has been configured with EIGRP and is interconnected with routing, the labeled data packet from R1 is sent directly to R3 without synchronization or prior checking. This is because EIGRP uses partial updates, which means it will only send an update if there is a change in the network. Next, configuration is done on the OSPF and EIGRP networks found in Configuration 1 and Configuration 2.

Configuration Code 1 OSPF Configuration

```

R1(config)#interface fastEthernet 0/0
R1(config-if)#ip address 10.64.1.1 255.255.0.0
R1(config-if)#ip address 10.64.1.1 255.255.0.0
R1(config-if)#no shutdown
R1(config-if)#
R1(config)#int fastEthernet 0/1
R1(config-if)#ip address 20.64.1.1 255.255.0.0
R1(config-if)#no shutdown
R1(config-if)#no shutdown
R1(config-if)#
R1(config)#router ospf 1
R1(config-router)#router-id 1.1.1.1
R1(config-router)#network 10.64.0.0 0.0.255.255
area 0
R1(config-router)#end
R1(config)#router ospf 1
R1(config-router)#network 20.64.0.0 0.0.255.255
area 0
R1(config-router)#end
R1#
    
```

As in configuration code 1, to build an interconnected OSPF network, each device needs an IP address so that the devices can recognize each other. Then, the Loopback IP address is configured for each router so that they can connect with the OSPF routing. After being configured with OSPF routing, each router will be able to communicate with each other.

Configuration Code 2 EIGRP Configuration

```

R1(config)#interface fastEthernet 0/1
R1(config-if)#ip address 20.64.1.1 255.255.0.0
R1(config-if)#no shutdown
R1(config-if)#exit
R1(config)#
R1(config)#interface fastEthernet 0/0
R1(config-if)#ip address 10.64.1.1 255.255.0.0
R1(config-if)#no shutdown
R1(config-if)#exit
R1(config)#end
R1(config)#router eigrp 100
    
```

```

8
R1 (config-router)#no auto-summary
R1 (config-router)#network 20.64.0.0 0.0.255.255
R1 (config-router)#network 10.64.0.0 0.0.255.255
R1 (config-router)#exit
    
```

In the configuration code 2, just like in the OSPF network, each device in the EIGRP network also needs an IP address so that the devices can recognize each other. After assigning an IP address to each router, the next step is to configure EIGRP on each router. After finishing configuring EIGRP routing, each router can communicate and connect with each other.

Next, after all the configurations are completed, the data collection process will be carried out using the Wireshark application with the data collected being the data on the current network traffic and then Quality of Service will be analyzed with parameters such as Throughput, Jitter, Delay, and Packet Loss. The data to be collected will be from the video streaming service that will be running for 3 minutes with 3 types of video resolutions, namely 360p, 480p, and 720p. This testing will be carried out on the OSPF and EIGRP networks.

### 3. RESULT AND DISCUSSION

The following are the tests that have been carried out and data capture using Wireshark on each OSPF network and EIGRP network and the results have been obtained. The following are the results of the captured data on the OSPF network and EIGRP network while running the video streaming service.

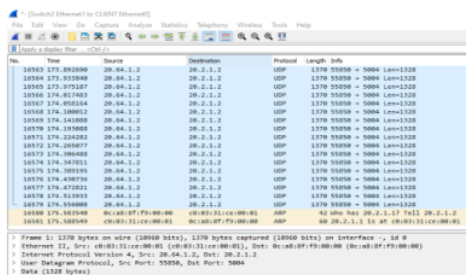


Figure 4. OSPF Network Capture

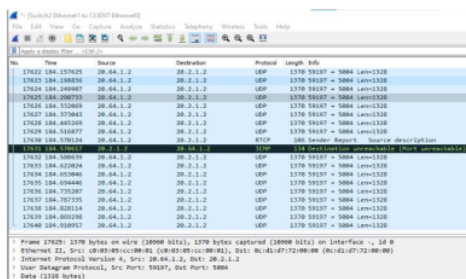


Figure 5. EIGRP Network Capture

The results of the video streaming data capture from the OSPF and EIGRP networks for 3 minutes in Figures 4 and 5 have been obtained and will be

analyzed for each network based on the QoS parameters that have been set, namely Throughput, Jitter, Delay, and Packet Loss.

Then, the results obtained will be compared with each QoS parameter, and the following are the results obtained. The QoS testing results using the Throughput parameter showed that the throughput of the OSPF and EIGRP routing has a significant difference depending on the video quality used. In the case of 360p and 480p video quality, the throughput of the OSPF and EIGRP routing tends to be the same, but in the case of 720p video quality, the throughput of EIGRP routing is much higher than OSPF routing.

This indicates that EIGRP routing has an advantage in terms of data transmission speed on the network, while OSPF routing has an advantage in terms of network stability and reliability. The selection between OSPF and EIGRP routing should be based on the desired network priorities. If the network prioritizes stability and reliability, then OSPF routing is recommended. OSPF routing has the ability to optimize data transmission paths and ensure that the network operates well and is free from problems such as poor user experience or downtime.

However, if the network prioritizes data transmission speed, then EIGRP routing is recommended. EIGRP routing has the ability to optimize data transmission speed and ensure that data can be forwarded quickly and efficiently through the network. Overall, the selection between OSPF and EIGRP routing should be based on careful analysis and consideration of the desired network priorities. Both routings have their own advantages and should be chosen according to the network's needs to work optimally and achieve the desired results. The testing results using the Throughput parameter are presented in Table 6.

Table 6. Parameter analysis Throughput

No	Video Quality	OSPF	EIGRP
1	360p	691159.6 kbps	759087.7 kbps
2	480p	683623.5 kbps	728497.8 kbps
3	720p	1030845.4 kbps	129901.6 kbps

Here are the results of Quality of Service testing using the Jitter parameter: the jitter values in OSPF and EIGRP routing vary depending on the video quality being used. In 360p and 480p video quality, jitter in OSPF routing is lower than in EIGRP routing. This indicates that OSPF routing has an advantage in terms of packet reception time stability, which is critical for ensuring good video quality for users. Unstable packet reception times can negatively affect video quality.

However, in 720p video quality, jitter in EIGRP routing is significantly lower than in OSPF routing. This shows that EIGRP routing has an advantage in network adaptability and flexibility. EIGRP can automatically adjust to changing network conditions and ensure that packets are received by users optimally.

In conclusion, OSPF routing has an advantage in terms of packet reception time stability, while EIGRP routing has an advantage in network adaptability and flexibility. The choice of using OSPF or EIGRP routing should be based on network priorities. If the network prioritizes stable packet reception times, OSPF is recommended. However, if the network prioritizes network adaptability and flexibility, EIGRP is recommended. The results of the testing using the Jitter parameter are shown in table 7.

Table 7. Parameter analysis Jitter

No	Video Quality	OSPF	EIGRP
1	360p	7.072 ms	14.334 ms
2	480p	7.377 ms	13.209 ms
3	720p	0.633 ms	10.484 ms

Next, the results of Quality of Service testing using the Delay parameter showed that there were differences in delay time experienced for each video quality when using OSPF and EIGRP. Delay time is the time required to send a data packet from one point to another. This is important because excessive delay can reduce the quality of the received video. However, the difference in delay time seen in table 8 is not significant and only differs by a few milliseconds. This indicates that both routings are able to provide stable delay times that do not significantly affect video quality. Therefore, both routings can be used according to each user's needs and preferences.

However, if network stability and avoiding delays is a priority, both routings can be used interchangeably. This can help maintain stable video quality and minimize unwanted delays. It is recommended to conduct a trial run on the intended network to determine which routing is more suitable for the needs and preferences. In addition, regularly monitoring and evaluating the network is important to ensure that network quality remains stable and meets expected standards. The following are the test results using the Delay parameter in table 8.

Table 8. Parameter analysis delay

No	Video Quality	OSPF	EIGRP
1	360p	14.733 ms	15.308 ms
2	480p	14.698 ms	15.103 ms
3	720p	10.589 ms	10.482 ms

The results of the latest test, which is the Quality of Service test using the Packet Loss parameter, showed that at all levels of video quality, no packets were lost using both OSPF and EIGRP routing. This indicates that both types of routing perform well in handling packets and ensuring no packet loss, which is crucial in maintaining the quality of video, preventing issues such as repetitive or faulty images or sound.

Since both routing methods perform well in this aspect, OSPF and EIGRP can be used according to the needs and preferences of the user. However, it should be noted that in certain situations, one routing method may perform better than the other. Therefore, it is

important to conduct a detailed analysis and testing to determine the routing method that is most suitable for specific situations and conditions.

In terms of packet loss, network reliability and stability are crucial factors that users should consider. Therefore, factors such as the number of packets, traffic levels, and network quality should be taken into account when choosing routing methods. This will help ensure that the network performs well and can address packet loss issues.

Overall, OSPF routing and EIGRP routing both perform well in terms of packet loss. Therefore, users should consider specific factors and conduct a detailed analysis and testing to determine the routing method that is most suitable for specific situations and conditions. The results of the test using the Packet loss parameter are shown in Table 9.

Table 9. Parameter analysis Packet Loss

No	Video Quality	OSPF	EIGRP
1	360p	0	0
2	480p	0	0
3	720p	0	0

#### 4. CONCLUSION

Based on the research results of Quality of Service analysis of video streaming services using OSPF and EIGRP networks with Throughput, Jitter, Delay, and Packet Loss parameters for 360p, 480p, and 720p video quality, it can be concluded that the performance of both OSPF and EIGRP routing protocols is good enough in delivering video data. In terms of throughput, EIGRP has better performance than OSPF for all video qualities. However, on the jitter parameter, OSPF has better performance than EIGRP for 360p and 480p video qualities. On the delay parameter, both protocols have the same performance for all video qualities. Finally, on the packet loss parameter, both protocols have the same good performance without any packet loss.

Therefore, it is recommended to consider the performance of each protocol for each video quality to be sent. If the priority is delivering data with a stable packet count and minimal jitter, OSPF may be a good choice. However, if the priority is delivering data at high speeds, EIGRP may be a better choice. Choosing the right routing protocol will affect the quality of data delivery and user experience.

#### 5. REFERENCE

- [1] G. A. Loka, "Analisa dan Perbandingan Kinerja Routing Protocol OSPF dan EIGRP dalam Simulasi GNS3," *JISA (Jurnal Inform. dan Sains)*, vol. 1, no. 2, pp. 37–41, 2019, doi: 10.31326/jisa.v1i2.300.
- [2] A. P. Munggaran, R. Munadi, and D. Perdana, "Analisis Dan Simulasi Perbandingan Qos Di Routing Protokol Mpls Ospf Dan Mpls Is-Is Di Jaringan Ipv6 Menggunakan Gns3 Untuk Layanan Video,"

- e-Proceeding Eng.*, vol. 5, no. 3, pp. 4374–4384, 2018.
- [3] Y. Novendra, Y. Arta, and A. Siswanto, “Analisis Perbandingan Kinerja Routing OSPF Dan EIGRP,” *It J. Res. Dev.*, vol. 2, no. 2, pp. 97–106, 2018, doi: 10.25299/itjrd.2018.vol2(2).1373.
- [4] Hasanul Fahmi, “Analisis Qos (Quality of Service) Pengukuran Delay, Jitter, Packet Lost Dan Throughput Untuk Mendapatkan Kualitas Kerja Radio Streaming Yang Baik,” *J. Teknol. Inf. dan Komun.*, vol. 7, no. 2, pp. 98–105, 2018.
- [5] U. Verawardina, “Analisis Perbedaan Peformance dan Quality Of Service (Qos) Antara Eigrp dengan Ospf (Studi Kasus Menggunakan 6 Router Melalui GNS 3 dan Wireshark),” *Int. J. Nat. Sci. Eng.*, vol. 2, no. 1, p. 10, 2018, doi: 10.23887/ijmse.v2i1.13908.
- [6] K. Thesman, A. Noertjahyana, and R. Lim, “Studi Perbandingan Routing Protocol Open Shortest Path First (OSPF) dan Enhanced Interior Gateway Routing Protocol (EIGRP) pada IPv6 dengan Menggunakan Simulator Graphical Network Simulator 3 (GNS3),” *Infra*, vol. Vol 5 No 2, 2017.
- [7] A. Rahman, “Implementasi Manajemen Bandwith Untuk Video Conference Dengan Metode Firewall Mangle Pada ROUTER RB951-2n,” *Ciastech*, no. Ciastech, pp. 341–350, 2020.
- [8] Subektiningsih, Renaldi, and P. Ferdiansyah, “Analisis Perbandingan Parameter QoS Standar TIPHON Pada Jaringan Nirkabel Dalam Penerapan Metode PCQ,” *Explore*, vol. 12, no. 1, pp. 57–63, 2022.
- [9] N. S. Abdullah, A. Fuad, and M. Jamil, “Penerapan Metode Simple Queue Pada Manajemen Bandwith untuk mengoptimalkan Bandwith Di Laboratorium Program Studi Teknik Informatika,” *JIKO (Jurnal Inform. dan Komputer)*, vol. 2, no. 1, pp. 6–13, 2019, doi: 10.33387/jiko.v2i1.1042.
- [10] I. Iskandar and A. Hidayat, “Analisa Quality of Service (QoS) Jaringan Internet Kampus (Studi Kasus: UIN Suska Riau),” *J. CoreIT*, vol. 1, no. 2, pp. 67–76, 2015.
- [11] J. M. Hily, S. D. Singer, Y. Yang, and Z. Liu, “A transformation booster sequence (TBS) from Petunia hybrida functions as an enhancer-blocking insulator in Arabidopsis thaliana,” *Plant Cell Rep.*, vol. 28, no. 7, pp. 1095–1104, 2009, doi: 10.1007/s00299-009-0700-8.
- [12] Rasudin, “Quality of Services (Qos) Pada Jaringan Internet Dengan Metode Hierarchy Token Bucket,” *J. Penelit. Tek. Inform. Univ. Malikussaleh*, vol. 4, no. 1, pp. 210–223, 2014.
- [13] I. W. Ardiyasa, L. P. Suwirmayanti, and J. L. Patarruk, “Analisa Perbandingan Quality of Service Pada Jaringan RIP dan OSPF Terhadap Layanan Video Streaming,” pp. 495–500, 2017.
- [14] H. A. Musril, “ANALISIS UNJUK KERJA RIPv2 DAN EIGRP DALAM DYNAMIC ROUTING PROTOCOL,” *J. Elektro dan Telekomun. Terap.*, vol. 2, no. 2, pp. 116–124, 2016, doi: 10.25124/jett.v2i2.99.
- [15] R. M. Herdiansyah, W. A. P., and D. F. K., “Quality Of Service ( Qos ) Layanan Video Conference Pada Jaringan High Speed Packet Access ( HSPA ) Menggunakan Emulator Graphical Network Simulator ( GNS ) 3,” *J. Mhs. Tek. Elektro*, p. 4, 2017.
- [16] M. Hasbi and N. R. Saputra, “Analisis Quality of Service ( Qos ) Jaringan Internet Kantor Pusat King Bukopin Dengan Menggunakan Wireshark,” *Vol. 12, No. 1, Sept. 2021, pp. 17 – 23 P-ISSN 2089 – 0256, e-ISSN 2598 – 3016*, vol. 12, no. 1, pp. 1–7, 2021.

# Fransiskus Simson

## ORIGINALITY REPORT

14%

SIMILARITY INDEX

11%

INTERNET SOURCES

9%

PUBLICATIONS

8%

STUDENT PAPERS

## PRIMARY SOURCES

1

[vsip.info](http://vsip.info)

Internet Source

1%

2

Sapriesty Nainy Sari, Muhammad Fauzan Edy Purnomo, Carissa Miranda. "Performance Comparison Analysis of Wireless Access Point (WAP) and Virtual Access Point (VAP) Based on Mikrotik at SD Negeri 01 Jambearjo", 2022 11th Electrical Power, Electronics, Communications, Controls and Informatics Seminar (EECCIS), 2022

Publication

1%

3

Submitted to Universitas Islam Lamongan

Student Paper

1%

4

Submitted to Khurasan University

Student Paper

1%

5

[techsoftcenter.com](http://techsoftcenter.com)

Internet Source

1%

6

[simpelmas.trunojoyo.ac.id](http://simpelmas.trunojoyo.ac.id)

Internet Source

1%

shendu3g.cn

7	Internet Source	1 %
8	1filedownload.com Internet Source	1 %
9	"MI-STA 2022 Conference Proceeding", 2022 IEEE 2nd International Maghreb Meeting of the Conference on Sciences and Techniques of Automatic Control and Computer Engineering (MI-STA), 2022 Publication	1 %
10	jurnal.polines.ac.id Internet Source	<1 %
11	www.coursehero.com Internet Source	<1 %
12	chennaicisco.blogspot.com.au Internet Source	<1 %
13	repository.unsoed.ac.id Internet Source	<1 %
14	zenodo.org Internet Source	<1 %
15	arxiv.org Internet Source	<1 %
16	Hari Antoni Musril, Febria Sri Artika, Sarwo Derta, Gusnita Darmawati, Riri Okra. "Quality of Service EIGRP Routing Protocol on Campus	<1 %

---

17 Nurul Faizah Rozy, Rachmat Ramadhiansya, Po Abbas Sunarya, Untung Rahardja. "Performance Comparison Routing Protocol AODV, DSDV, and AOMDV with Video Streaming In Manet", 2019 7th International Conference on Cyber and IT Service Management (CITSM), 2019  
Publication

<1 %

---

18 123deta.com  
Internet Source

<1 %

---

19 Firmansyah, Mochamad Wahyudi, Rachmat Adi Purnama, Lise Pujiastuti. "Performance Analysis of Routing Enhanced Interior Gateway Routing Protocol Load Balancing for IPv6", 2019 Fourth International Conference on Informatics and Computing (ICIC), 2019  
Publication

<1 %

---

20 jurnal.umj.ac.id  
Internet Source

<1 %

---

21 jurnal.unimed.ac.id  
Internet Source

<1 %

---

22 prosiding.konik.id  
Internet Source

<1 %

23

Internet Source

<1 %

---

24

Rudi Yanto, Dedy Irfan, Asrul Huda. "Analisis Quality of Service Jaringan Wireless untuk Teknologi Streaming", Edumatic: Jurnal Pendidikan Informatika, 2022

Publication

<1 %

---

Exclude quotes On

Exclude matches Off

Exclude bibliography On



**Sp.** This word is misspelled. Use a dictionary or spellchecker when you proofread your work.



**Proper Noun** If this word is a proper noun, you need to capitalize it.



**Sp.** This word is misspelled. Use a dictionary or spellchecker when you proofread your work.



**Frag.** This sentence may be a fragment or may have incorrect punctuation. Proofread the sentence to be sure that it has correct punctuation and that it has an independent clause with a complete subject and predicate.



**Sentence Cap.** Remember to capitalize the first word of each sentence.



**Sp.** This word is misspelled. Use a dictionary or spellchecker when you proofread your work.



**Sp.** This word is misspelled. Use a dictionary or spellchecker when you proofread your work.



**Sp.** This word is misspelled. Use a dictionary or spellchecker when you proofread your work.



**Sp.** This word is misspelled. Use a dictionary or spellchecker when you proofread your work.



**Wrong Article** You may have used the wrong article or pronoun. Proofread the sentence to make sure that the article or pronoun agrees with the word it describes.



**Article Error** You may need to use an article before this word.



**Possessive** This word may be a plural noun and may not need an apostrophe.



**Sentence Cap.** Remember to capitalize the first word of each sentence.



**Missing ", "** You may need to place a comma after this word.



**Article Error** You may need to remove this article.



**Wrong Article** You may have used the wrong article or pronoun. Proofread the sentence to make sure that the article or pronoun agrees with the word it describes.



**Article Error** You may need to use an article before this word.



**P/V** You have used the passive voice in this sentence. Depending upon what you wish to emphasize in the sentence, you may want to revise it using the active voice.



**Sp.** This word is misspelled. Use a dictionary or spellchecker when you proofread your work.



**Frag.** This sentence may be a fragment or may have incorrect punctuation. Proofread the sentence to be sure that it has correct punctuation and that it has an independent clause with a complete subject and predicate.



**Article Error** You may need to remove this article.



**P/V** You have used the passive voice in this sentence. Depending upon what you wish to emphasize in the sentence, you may want to revise it using the active voice.



**Article Error** You may need to remove this article.



**Article Error** You may need to remove this article.



**Sp.** This word is misspelled. Use a dictionary or spellchecker when you proofread your work.



**P/V** You have used the passive voice in this sentence. Depending upon what you wish to emphasize in the sentence, you may want to revise it using the active voice.



**P/V** You have used the passive voice in this sentence. Depending upon what you wish to emphasize in the sentence, you may want to revise it using the active voice.



**Article Error** You may need to use an article before this word.



**Article Error** You may need to remove this article.



**Article Error** You may need to remove this article.



**P/V** You have used the passive voice in this sentence. Depending upon what you wish to emphasize in the sentence, you may want to revise it using the active voice.



**P/V** You have used the passive voice in this sentence. Depending upon what you wish to emphasize in the sentence, you may want to revise it using the active voice.



**Sp.** This word is misspelled. Use a dictionary or spellchecker when you proofread your work.



**Proofread** This part of the sentence contains a grammatical error or misspelled word that makes your meaning unclear.



**P/V** You have used the passive voice in this sentence. Depending upon what you wish to emphasize in the sentence, you may want to revise it using the active voice.



**Sp.** This word is misspelled. Use a dictionary or spellchecker when you proofread your work.



**Sp.** This word is misspelled. Use a dictionary or spellchecker when you proofread your work.



**Sp.** This word is misspelled. Use a dictionary or spellchecker when you proofread your work.



**Sp.** This word is misspelled. Use a dictionary or spellchecker when you proofread your work.



**Sp.** This word is misspelled. Use a dictionary or spellchecker when you proofread your work.



**Sp.** This word is misspelled. Use a dictionary or spellchecker when you proofread your work.



**Sp.** This word is misspelled. Use a dictionary or spellchecker when you proofread your work.



**Sp.** This word is misspelled. Use a dictionary or spellchecker when you proofread your work.



**Sp.** This word is misspelled. Use a dictionary or spellchecker when you proofread your work.



**Sp.** This word is misspelled. Use a dictionary or spellchecker when you proofread your work.



**Article Error** You may need to remove this article.



**Sp.** This word is misspelled. Use a dictionary or spellchecker when you proofread your work.



**Sp.** This word is misspelled. Use a dictionary or spellchecker when you proofread your work.



**Sp.** This word is misspelled. Use a dictionary or spellchecker when you proofread your work.



**Sp.** This word is misspelled. Use a dictionary or spellchecker when you proofread your work.



**Sp.** This word is misspelled. Use a dictionary or spellchecker when you proofread your work.



**Sp.** This word is misspelled. Use a dictionary or spellchecker when you proofread your work.



**Sp.** This word is misspelled. Use a dictionary or spellchecker when you proofread your work.



**Sp.** This word is misspelled. Use a dictionary or spellchecker when you proofread your work.

PAGE 4

---



**Sp.** This word is misspelled. Use a dictionary or spellchecker when you proofread your work.



**Wrong Article** You may have used the wrong article or pronoun. Proofread the sentence to make sure that the article or pronoun agrees with the word it describes.



**Missing ", "** You may need to place a comma after this word.



**Sp.** This word is misspelled. Use a dictionary or spellchecker when you proofread your work.



**Sp.** This word is misspelled. Use a dictionary or spellchecker when you proofread your work.



**Sp.** This word is misspelled. Use a dictionary or spellchecker when you proofread your work.



**Sp.** This word is misspelled. Use a dictionary or spellchecker when you proofread your work.



**Sp.** This word is misspelled. Use a dictionary or spellchecker when you proofread your work.



**Sp.** This word is misspelled. Use a dictionary or spellchecker when you proofread your work.



**Wrong Article** You may have used the wrong article or pronoun. Proofread the sentence to make sure that the article or pronoun agrees with the word it describes.



**P/V** You have used the passive voice in this sentence. Depending upon what you wish to emphasize in the sentence, you may want to revise it using the active voice.

PAGE 5

---



**Sp.** This word is misspelled. Use a dictionary or spellchecker when you proofread your work.



**Missing ", "** You may need to place a comma after this word.



**Sp.** This word is misspelled. Use a dictionary or spellchecker when you proofread your work.



**Article Error** You may need to use an article before this word.



**Article Error** You may need to remove this article.

PAGE 6

---